

An eco-friendly and  
secure investment!



# CTC Brilliant

Hot water heater for nearly all hot water needs

A series of ultra-efficient stainless steel water heaters in several models for houses and holiday homes: 60, 110, 200 and 300

- Several models able to meet most needs
- Well-insulated with effective and eco-friendly foam insulation
- Easy bottom connection with the supplied filler manifold
- Water store in stainless steel
- Easily combined with the most common heating systems
- High efficiency level



Ecodesign data scale (A<sup>+</sup> to F)

Find a CTC distributor in your country - [www.ctc-heating.com](http://www.ctc-heating.com)



MADE IN SWEDEN

# - Simply brilliant hot water heaters from CTC

## **Well-insulated for minimal loss**

To minimise heat loss and to meet high European energy requirements, all models are insulated with effective and eco-friendly foam insulation. Heating occurs via a stainless steel immersion heater controlled by an adjustable thermostat.

## **Wall-mounted hot water heaters**

CTC Brilliant 60 and 110 are compact and practical, and our smallest hot water heaters. They are specially designed for holiday homes or small houses, where high output is required in a small area. For quick and easy connection, CTC Brilliant 60 and

110 have factory-fitted cords and plugs. Both models can be easily mounted to walls using the supplied bracket. Water connection is from the bottom via the supplied filler manifold.

## **Floor-standing water heaters**

To ensure you obtain a neat and uniform installation, CTC Brilliant 200 and 300 are in the same modern design as our heat pumps. These water heaters can be installed in sculleries and laundry rooms.

## **High volume of hot water**

If you have a big family or a large hot tub, it may be a good idea to combine

your heat pump with CTC Brilliant 300. This combination can meet very high hot water needs with the least possible energy consumption.

## **A dream to install**

For installers, a floor-standing CTC Brilliant is a dream to install. The service hatches, located at the bottom of both sides of the product, are large and easy to detach during installation and when checking water meters and connections. The product can be positioned right up against a wall for top connection thanks to the smart design of the top and rear.



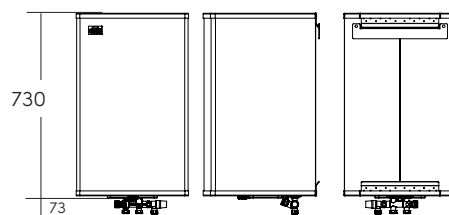
## Delivery list and dimensions diagram

### CTC Brilliant 60-110:

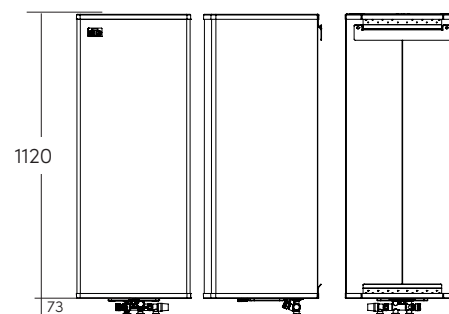
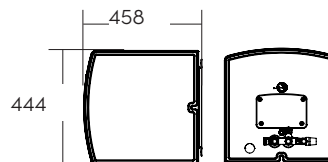
Bottom connection water heaters with factory-fitted immersion heater, thermostat, and connection cable with plug.

#### Packaging includes:

Combination valve KLK 15, wall bracket, and manual.



CTC Brilliant 60



CTC Brilliant 110

### CTC Brilliant 200-300:

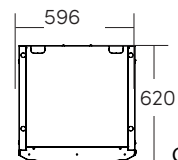
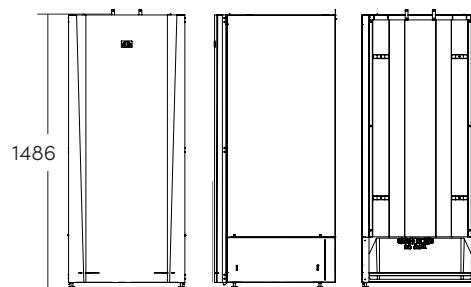
Bottom connection water heaters with factory-fitted immersion heater and thermostat.

#### Packaging includes:

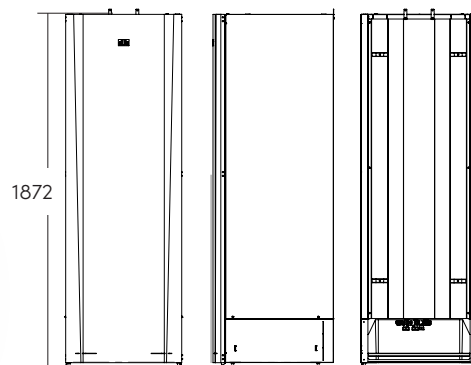
Combination valve KLK 22 and manual.



CTC Brilliant 200



CTC Brilliant 300



## Accessories:

For areas with calcareous water



### Steatite heater 1.5 kW 1"

Ceramic immersion heater (Length: 445 mm) for CTC Brilliant 200-300.

CTC no.: 589031301

RSK: 6937003

Technical data		60	110	200	300
RSK no.		693 8172	693 8173	693 8174	693 8175
CTC no.		588900001	588901001	588903001	588904001
Weight	kg	21	29.6	66	89
Dimensions (depth x width x height)	mm	458x444x730	458x444x1120	620x596x1486	620x596x1872
DHW connection (clamp ring connector)	mm	15	15	22	22
DHW connection (clamp ring connector)	mm	15	15	22	22
Sound power indoors $L_{WA}$	dB(A)	15	15	15	15
Electrical Data, connection		230V 1N~ 50/60 Hz		400V 2N~ 50/60 Hz	
Recommended fuse	A	10	10	10	10
Ingress protection class (IP)		IP 22		IP 44	
Immersion heater 1" 230V Immersion length: 317 mm	kW	2	2	-	-
Immersion heater 1" 400V Immersion length: 445mm	kW	-	-	3	3
Output range immersion heater (min-max)	kW	2-2	2-2	3-3	3-3
Max. operating pressure (PS)	bar	10	10	10	10
Tank volume DHW	litres	56	100	190	282
DHW performance ( $V_{40}$ ) Volume 40 °C	litres	71	146	281	392
Heating time from 10 to 60 °C	min	100	195	215	330
Thermostat factory setting (30-75 °C)	°C	60	60	60	60
Load profile DHW		M	M	XL	XL
Energy efficiency class DHW		C	B	C	C

Energy labelling stickers and data sheets can be downloaded from [www.ctc-heating.com/Ecodesign](http://www.ctc-heating.com/Ecodesign)

CTC Brilliant can be installed in most domestic hot water systems provided that the water's chloride content does not exceed 50 mg/l and the pH value is not lower than 7.5.



info@ctc.se  
+46 372 88 000  
Fax: +46 372 86 155



P.O Box 309 SE-341 26 Ljungby Sweden